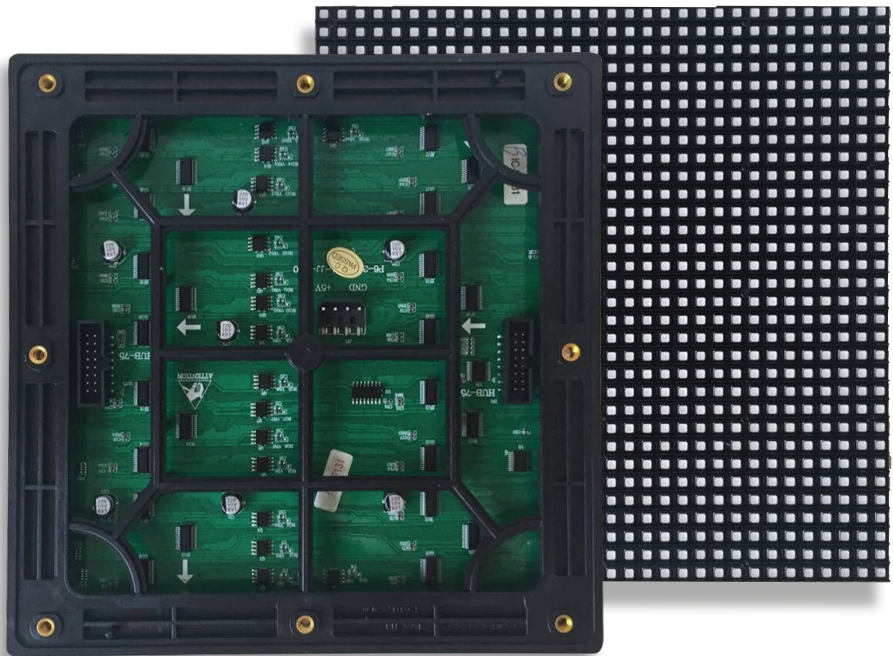


# INSTRUCTION MANUAL

Product name: Outdoor Display Screen  
SKU : 11078



## INTRODUCTION

Thank you for selecting and buying V-TAC product. V-TAC will serve you the best. Please read these instructions carefully before starting the installing and keep this manual handy for future reference. If you have any another query, please contact our dealer or local vendor from whom you have purchased the product. They are trained, and always ready to serve you.

**! WARNING**

- Take care not to pull the wiring during unpacking, please check whether screen/parts/wiring have been damaged during transport and do not operate/install any product which appears damaged in any way. In such a case, return the complete product to the place of purchase for inspection, repair or replacement.
- Although easy to fit, this screen requires wiring to the main and for safety, should only be installed by a qualified electrician.
- Always turn off the power before installation, inspection, maintenance, or removal.
- The product should be installed in a dry area.
- DO NOT EXCEED THE MAXIMUM WATTAGE RATING.



**PRODUCT OVERVIEW :**

This is an Outdoor LED Finished Cabinet. The product is fitted with LED, which is an innovative and progressive technology. LED products are 100% efficient, and brighter than any other products.

This product can be used in stations, ports, airports, shopping malls, hotels, meeting rooms, stage, etc.

**SPECIFICATIONS :**

<b>LED Module Parameter</b>	Pixel pitch	56mm
	LED Specification	SMD3535
	LED Configuration	SMD 3 in 1
	Module Size	192*192mm
	Module Resolution	32*32=1024dot
	Drive Method	1/8 scan constant current
	Drive IC	SM16106
	Power Consumption	35W
<b>LED Cabinet Parameter</b>	Cabinet Size(L*H*D)	768*768*160mm
	Cabinet Resolution	128*128
	Module quantity each cabinet	4*4=16
	Power Consumption	800w/cabinet
	Cabinet Material	Iron
	Cabinet Weight	25.5kg/cabinet
<b>Screen Parameter</b>	Pixel Density	40000dots/sqm
	Brightness	1800nits
	Optimum View Distance	more than 5m
	Gray Scale	16bits
	Display Color	281 trillions(synchronized)
	Operation Power	220V-240V/ 50/60HZ
	Power Consumption	300W/cabinet
	Control Mode	Synchronized
	Refresh Frequency	more than 700HZ
	Surport Signal Input	S-Video,RGBHV,YUV etc.
	Control Distance	UTP140M,SINGLE MODE FIBER 15KM
	Operating Humidity	10%-90%
	Life Span(50% brightness)	100000hrs
	IP(Front)	IP20
	Control System	"PCTV nonlinearity card, DVI display card Linsn control system"

### **INSTALLATION :**

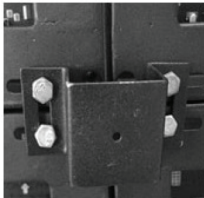
1. To fix the screen, first make a stable steel structure (The backside of cabinets need to have protection).
2. Lock the backside door of the cabinet. If you want to open the door, use the key.



3. Connect each cabinet by using wrench to connect the side locks on each cabinet, one by one.



4. Ensure all the cabinets are locked properly.
5. To fix the cabinet with the steel structure, use the U-shaped steel connector. The connector can be used to join the cabinets with the help of screws.
6. Now connect the signal & power cable (in & out) from cabinet to cabinet.










7. Connect the main power cable from the power box to the screen.
- Now, connect the main signal cable from the computer to the screen.
8. Ensure that all the connections have been made properly. Then, turn on the power.
9. Insert the sending card in the CPU. Now install the software, and start the setup for the control system.

### **ADDITIONAL INFORMATION :**

1. Each cabinet is equipped with a synchronous card.
2. The maximum number of cabinets that can be connected vertically is 12.
3. Signals can travel between cabinets using up & down or left & right connection. The default cascading is up & down connection.
4. Connect the AC power cable between cabinets using the up & down cascading connection.
5. Each AC power cable lead from the distribution cabinet can cascade 12 unit cabinets at the most.
6. The power consumption per square meter is 1000W.
7. This product is for outdoor use only.
8. One sending card can support 1024(W)\*768(H) dots screen area.

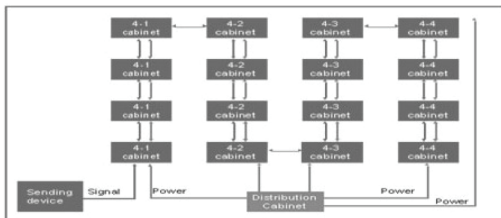
### SAFETY INSTRUCTION :

-  Please ensure that you read all the safety instructions before installing this product.
-  This product is intended for professional use only.  
Fire, electric shock or dropping the product may lead to severe injuries, or even death.
-  Warning : The cabinets are heavy. Be careful in order to avoid injuries.
-  Warning : Beaware of shock!  
Switch off the power before cabling or wiring, or before connecting or disconnecting any part of the product.  
The mains switch should be located nearby the product, and in an obvious & easy-to-reach place, so that power can be disconnected as soon as possible, in case a failure arises.  
Install the product only in an even and stable area.  
After succesfully assembling the display, check to ensure that the power wiring is in a good condition.
-  Warning : Beaware!  
The installation location of the displays needs good ventilation . Do not hang anything on the display.
-  Warning! Wear a crash helmet, so as to avoid any injuries.
-  Please pay attention to the Visual Distance, and avoid watching the screen closely, for a prolonged period, so as to avoid any damage to the vision.

### SYSTEM CONFIGURATION :

The whole system is made of the following parts :

1. Series cabinet
2. Distribution cabinet
3. Controlling computer



*Right distribution connection diagram of cabinet*

